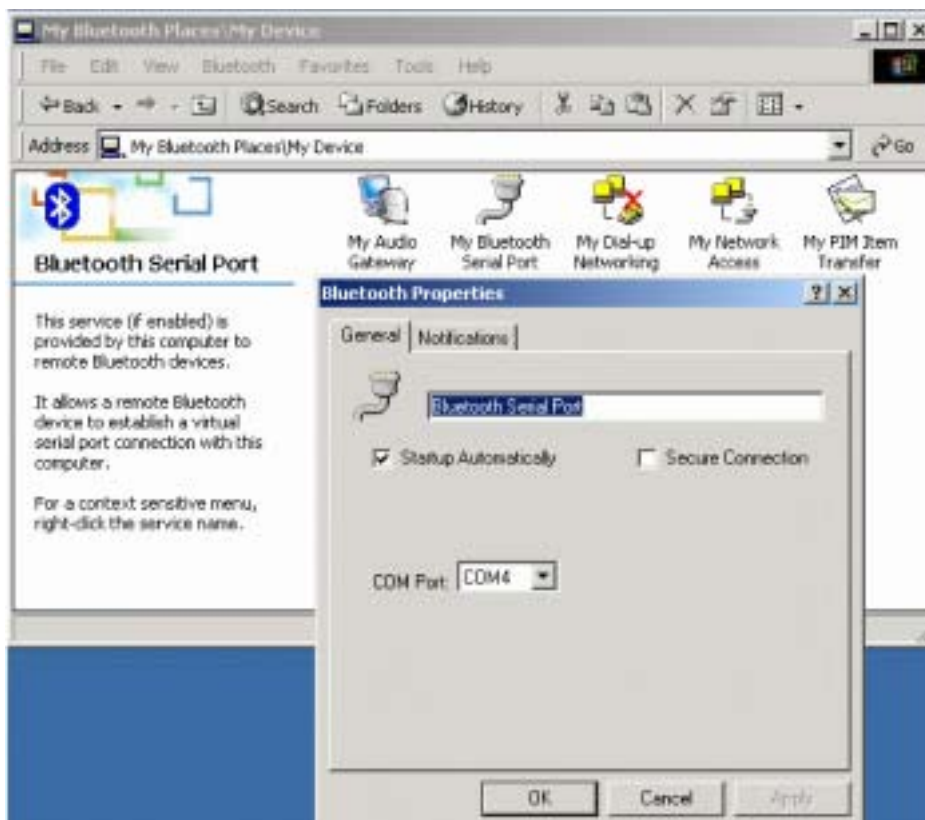


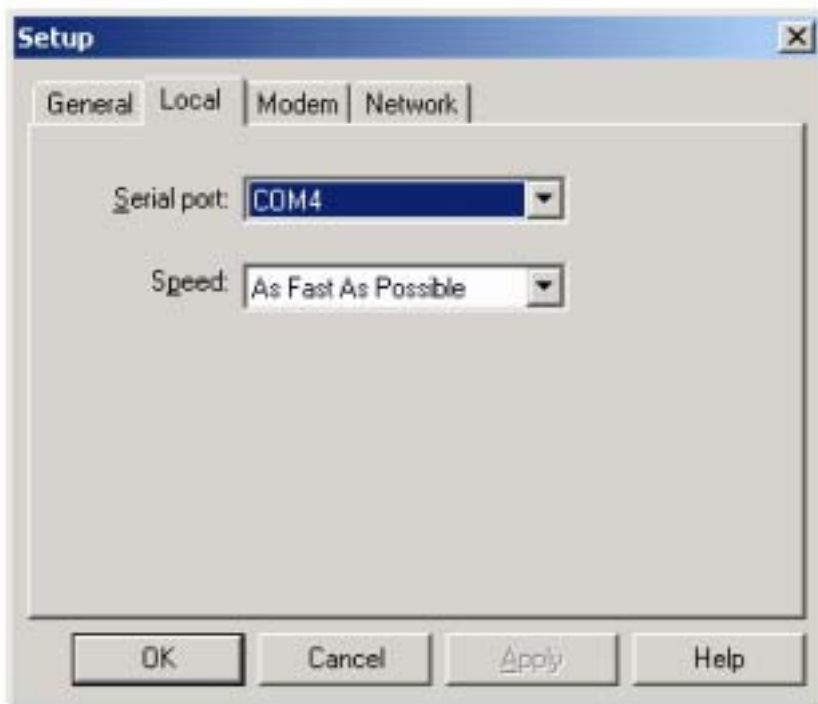
How to HotSync with Palm Bluetooth SDIO and Tungsten T

Please make sure you have installed Bluetooth software and Palm Desktop on your notebook or desktop PC before proceeding to the setup instructions below.

- (1) From the Palm main panel, tap the HotSync icon.
- (2) Tap HotSync and select "Connection Setup" from the menu bar.
- (3) Tap "New".
- (4) Give the new connection a name, e.g. BTConnection.
- (5) Change "Connect to:" to "PC".
- (6) Change "Via:" to "Bluetooth".
- (7) The "Device:" option will pop up, tap to find the Bluetooth system you wish to HotSync with.
- (8) Select the Bluetooth system you wish to HotSync with and tap OK.
- (9) Tap "Yes" when prompted with "Do you want to add *** to your trusted device list?".
- (10) Key in the same passkey on Palm and your notebook or desktop PC to complete the pairing process.
- (11) Tap "OK" and "Done" to return to the HotSync panel
- (12) Tap the dropdown menu to select the Bluetooth connection you have just created.
E.g. BTConnection
- (13) From the notebook, find out the local COM port used by "Bluetooth Serial Port", e.g. COM4. (My Bluetooth Places->My Device, right click My Bluetooth Serial Port and select Properties)



(14) Change the COM port setting in Palm HotSync to match the COM port found in step 11, e.g. COM4.



(15) Change the connection type to "Local Serial" in the HotSync Manager.



(16) Tap the HotSync silk button on Palm, and the HotSync process should begin in a few seconds.

How to dial-up from Palm Tungsten T to my PC's modem to surf the Internet

- (1) Enable Bluetooth on your PC and make sure you can dial up to the ISP with your modem.
- (2) On your Palm, in the main panel, tap "Prefs", select "Communication", and select "Network".
- (3) Tap "New" button.
- (4) Key in a new name for "Service:", e.g. pcmodem.
- (5) Key in the "User Name:"
- (6) Key in the "Password:"
- (7) Tap on "Connection" and select "Edit Connections..." to create a new connection setup.
- (8) Tap "New" button.
- (9) Key in a new name for "Name:", e.g. btmodem
- (10) Tap on "Connect to:" and select "Modem"
- (11) Tap on "Via:" and select "Bluetooth"
- (12) Tap on "Device:", wait for your PC to be found
- (13) Select your PC and tap "OK"
- (14) Palm will ask you to add your PC to the trusted device list, tap "Yes"
- (15) Key in a numeric passkey, e.g. 1, and tap "OK"
- (16) Type in the same passkey on your PC, now the pairing process is complete
- (17) Make sure "Dialing:" is set at "Touch Tone"
- (18) Tap the "OK" button and "Done" to return to the Network page
- (19) Tap on "Connection:" and select the connection setup you've just created
- (20) Tap on "Phone:" and enter the phone number of your ISP
- (21) Tap the "Connect" button and the modem on your PC should start dialing
- (22) Once connected, launch a web browser and you should be surfing the Internet.